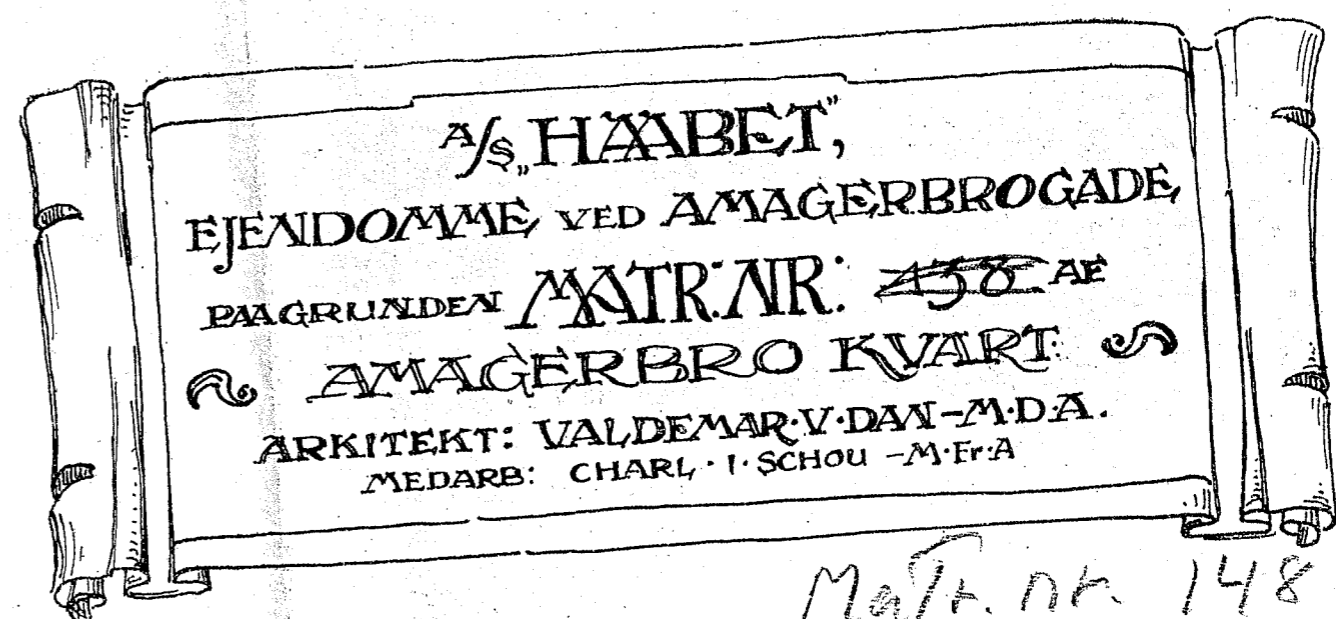
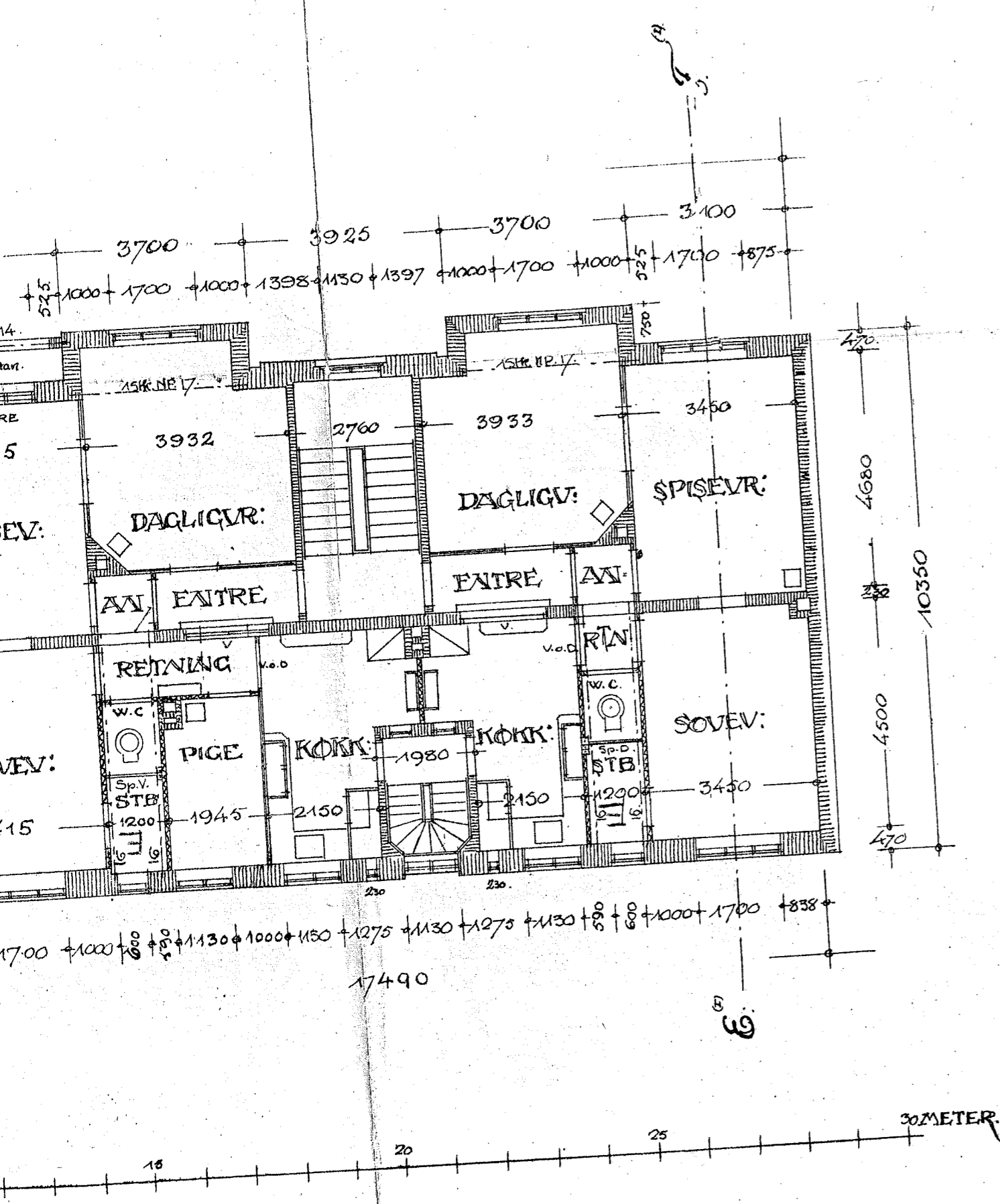


6738.

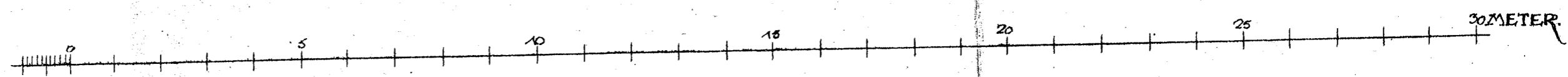
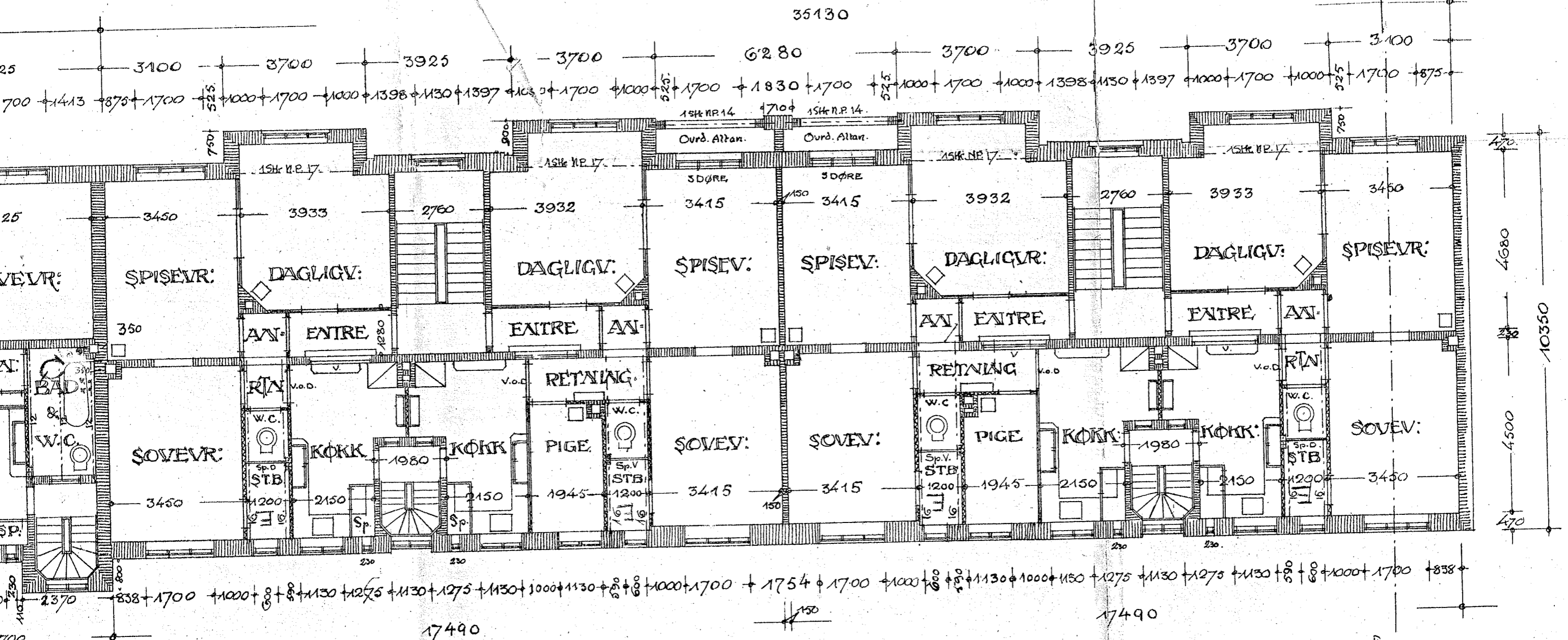
1518



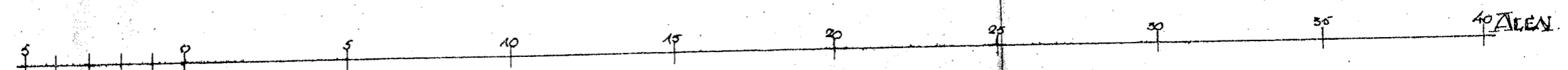
Matr. nr. 148 AM.

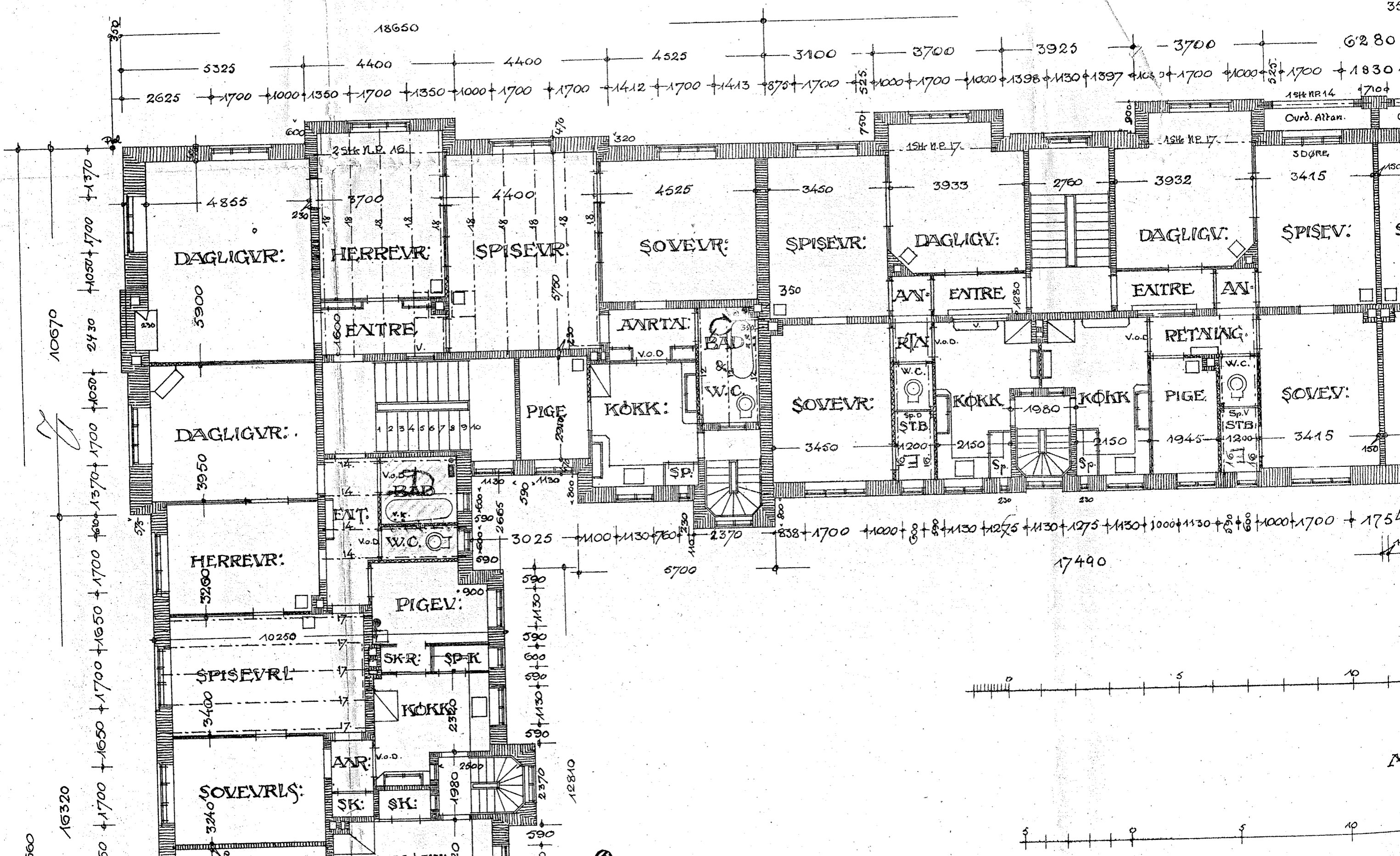
ETAGEPLAN.

II.



MAALEST-FH: 1/100.



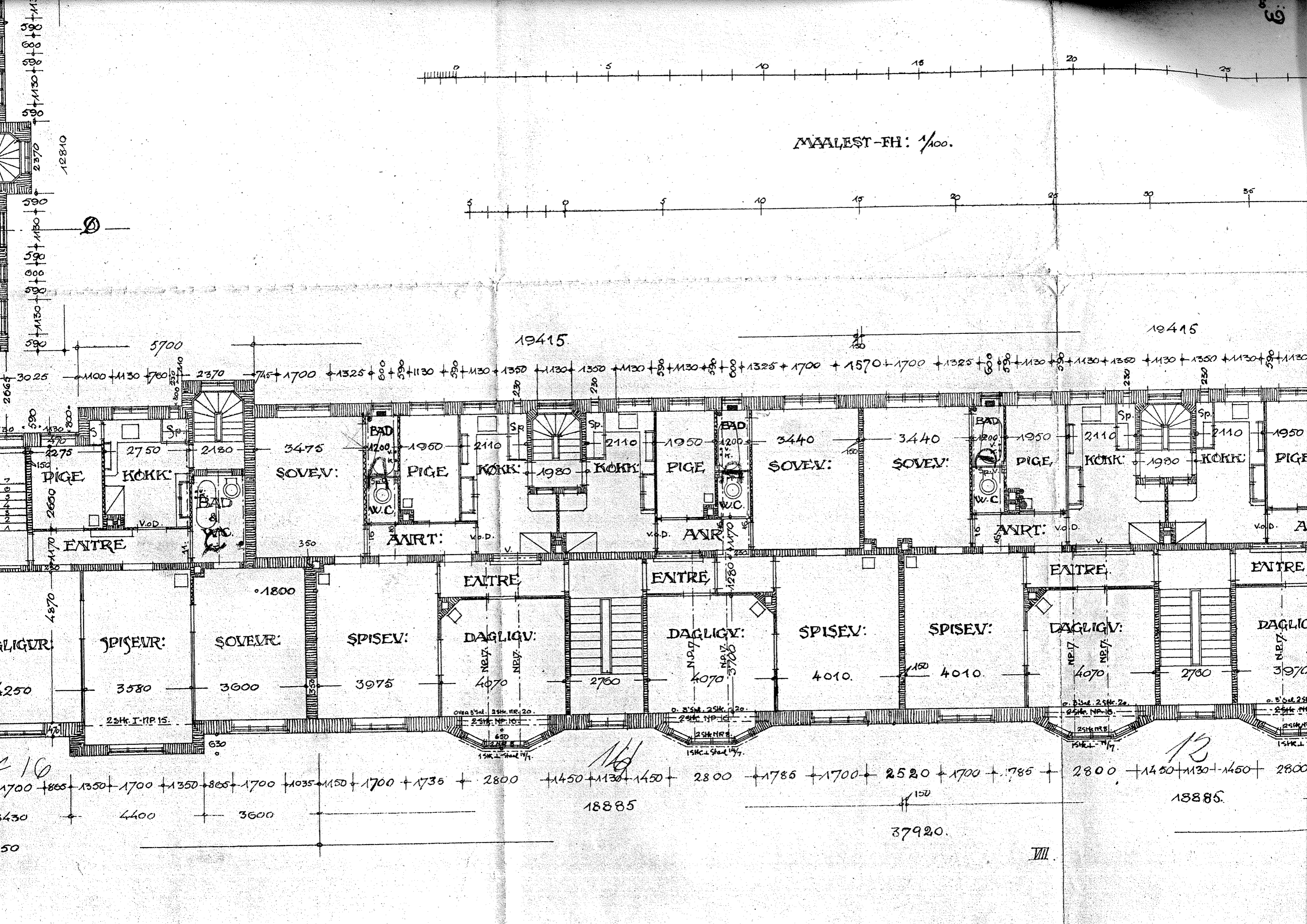
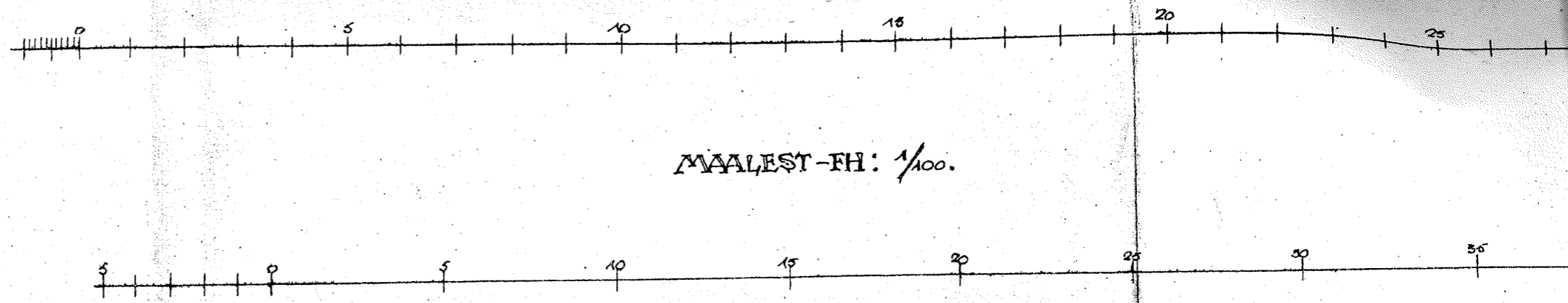


I.

M







19415

18415

18885

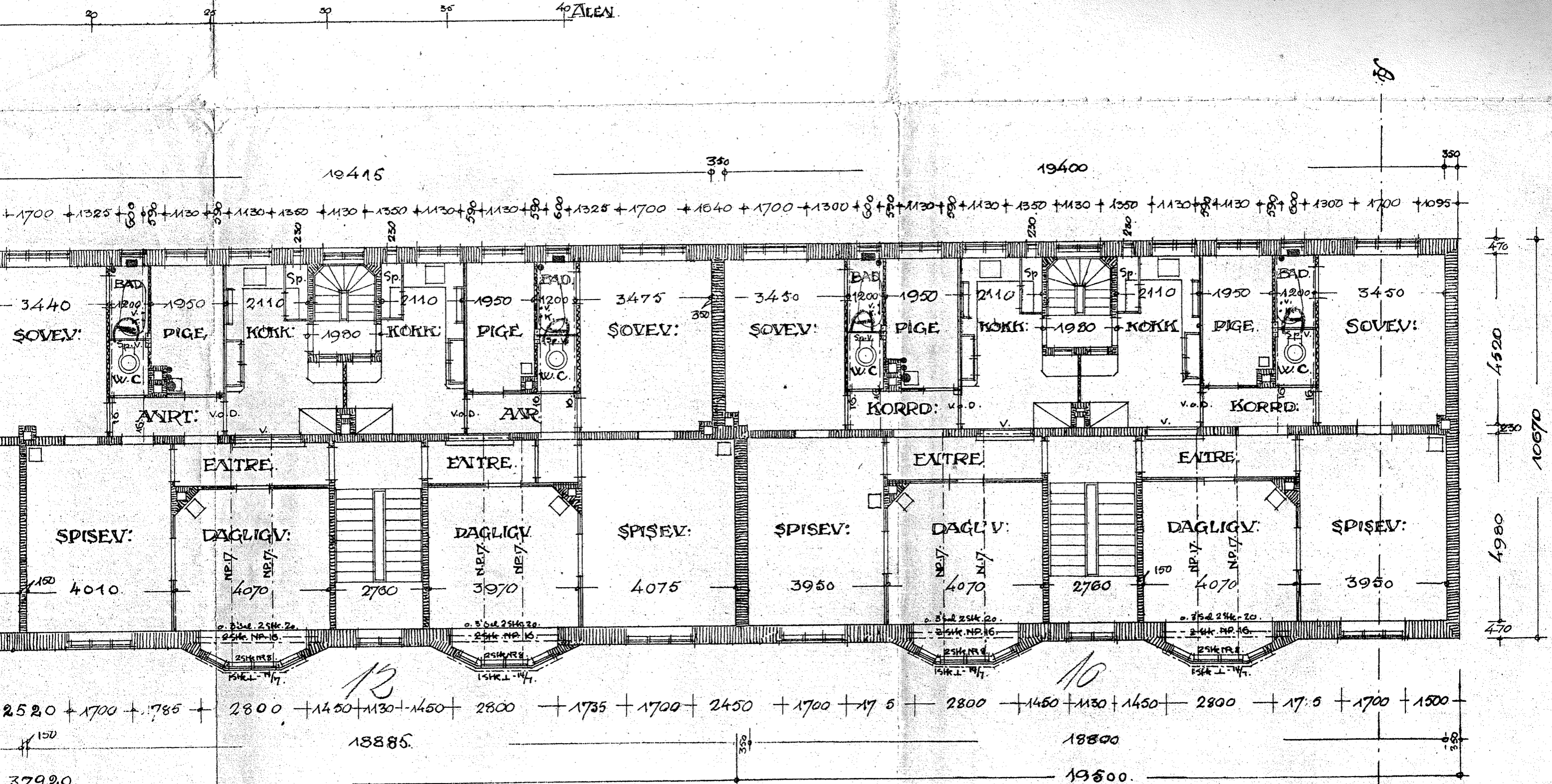
18885

37920

VIII

FH: 1/100.

40 ALAN



KJØBENH: D: 15 APRIL 1912

Talsman *Talsman*

B.K. 787/13 9/5